



DEPARTMENT OF BIOMEDICAL
ENGINEERING



D . G

27 .

D J

10 A

, A, 7 9, 2024

A :

D. J , **C.** , **J. A** , **A. N** , **N.** , **H. C** , **J.** , .
 , **J.** , **J. B** , . **A.** , **K. G**

E D a e Ø . Z a ☒
A B

B A
23 26 A ,

E. D a , œ S §. e , . ,
. P. Z a ,

, A
_____ B _____ B _____

A _____ , 23 26, 2024,

A , B A , 1 , C

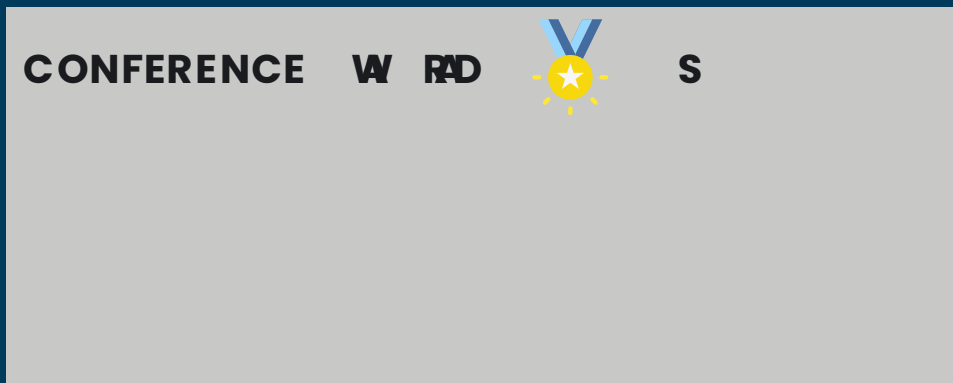
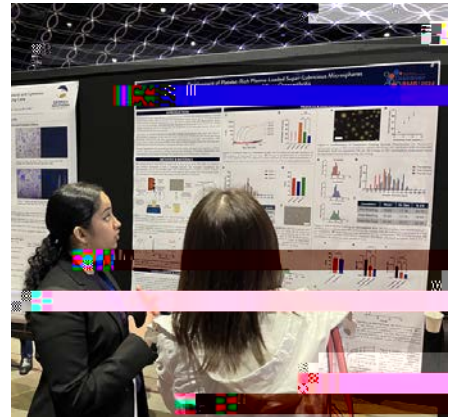
B C ☒

D . Z a

!

. B , . a S § e Pe Z S a , . ,
B A

A C _____ , 17 21, 2024, _____ , (_____),
A



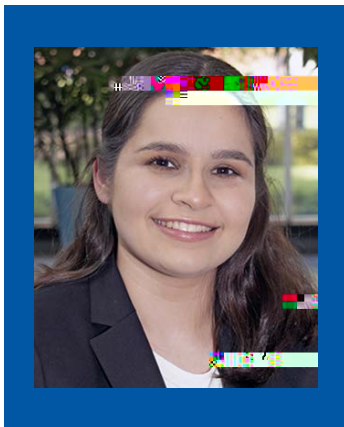
Graduate student **Willie Doe** from **D. e a lab** is featured in the Saint Louis Science Center's member magazine for combining her science and art passions into a 3-D model of the human brain!



I D CE A DI RE I CE I R DNGYN NGR

DE AD A E DE

Congratulations to **A** (junior) for her acceptance into the 2024 Summer Undergraduate Research Fellowship (SURF) program at Stanford University's School of Engineering!



Andrea will join 34 other SURF scholars for a summer full of engaging research, community building, professional development, and excursions from the Stanford campus. Her summer research will focus on developing polymer materials and devices for soft electronics that can be used for robotic and biomedical applications.

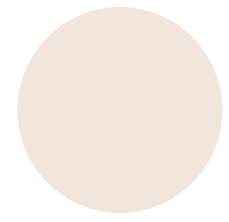
We are excited for Andrea to represent SLU BME and the School of Science and Engineering in this exciting program! Congratulations, Andrea!

C



The is coming up! This is an opportunity for our undergraduates to showcase their research and design projects from their capstone experiences in the engineering, science and aviation programs. Industry partners, faculty, staff, alumni, families, peers, and members of the SLU Community are invited to attend. Light refreshments and drinks will be served! Register to attend by clicking on the picture above!

C E A



I IA FOCSA A T L MED S DI E T W WID AG
T TS OUSDI

B E ? A ?
D D

C

